

CONEN MOUNTS

Height adjustable systems for (interactive) displays from 70"

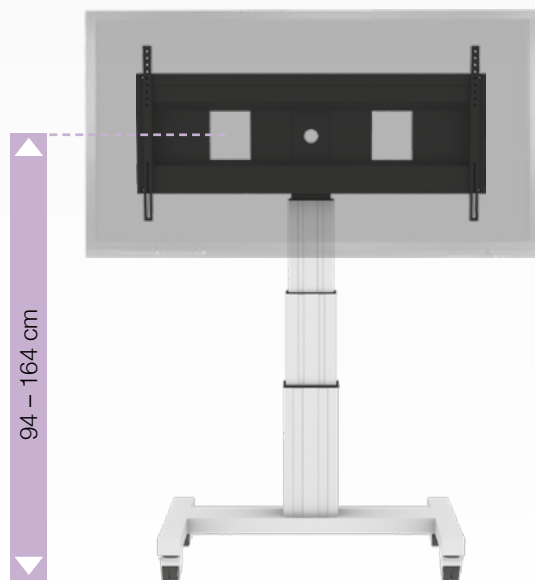
Electrically height adjustable systems with mobile stand – VESA 800/ 1000/ 1200

SCEXL..

Height adjustable, central aluminum column with XL-VESA display mount. Mobile stand with H-shaped stand with 4 heavy duty castors, 2 lockable.

Features:

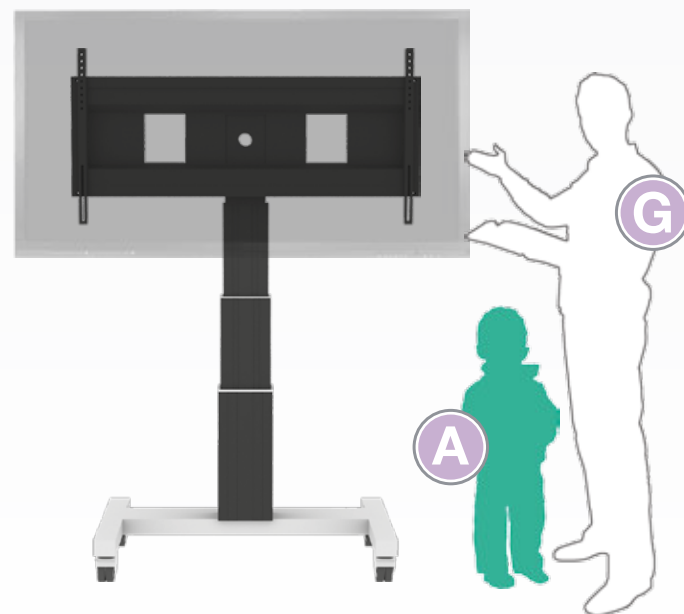
- Frame for all 70" – 120" Displays
- VESA horizontal: 800/ 1000/ 1200
VESA vertical: 200 – 600
- Fits heavy and large displays
- Maximum weight load 150 kg
- H-shaped mobile stand, RAL 9006 white aluminum



- 2 x 35 cm stroke
- Early years – adult

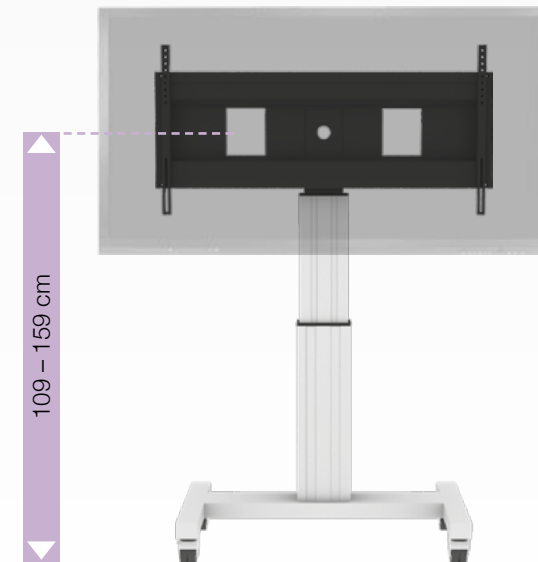
Column natural anodized

Item no. SCEXL3535



Column black anodized

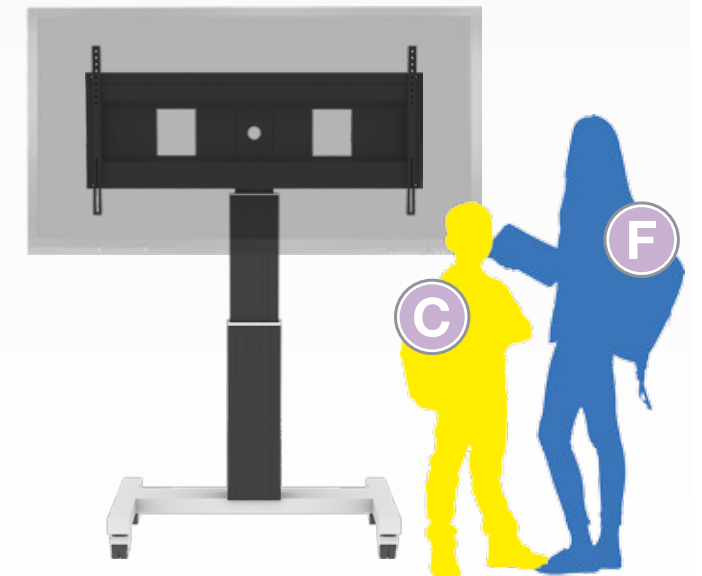
Item no. SCEXL3535B



- 50 cm stroke
- Primary – secondary school

Column natural anodized

Item no. SCEXL



Column black anodized

Item no. SCEXLB